

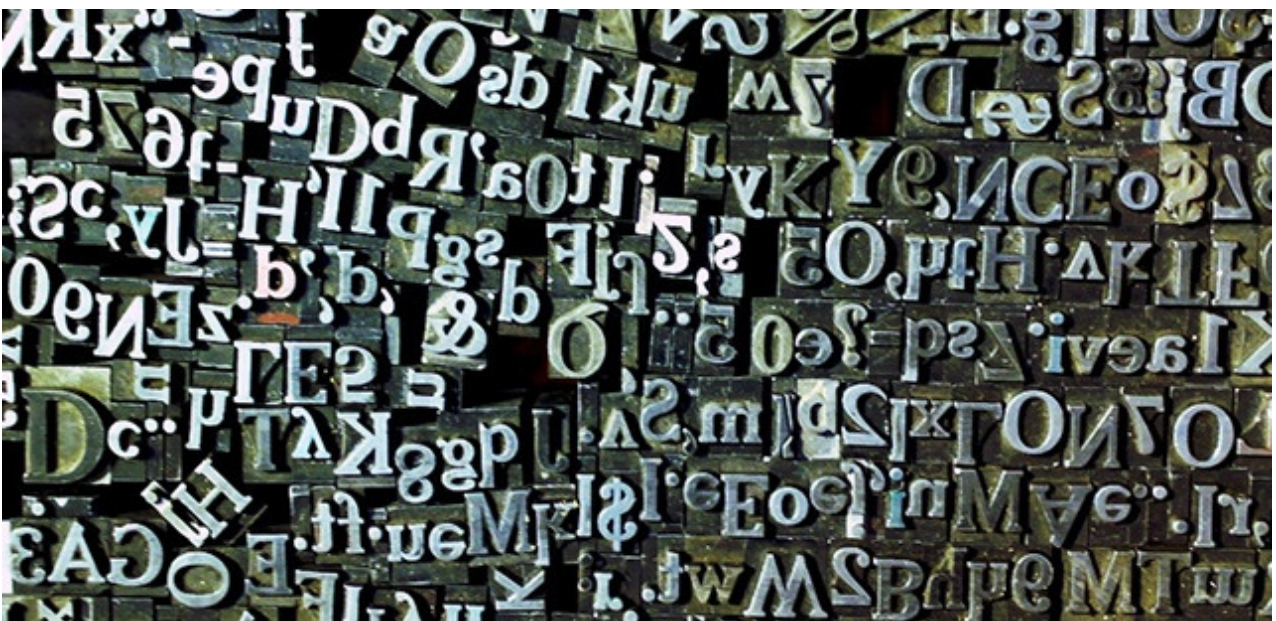


cnc webschool
knowledge to improve

Appendix 1: Auxiliary Information

Table of ASCII and UNICODE characters

Paper Size: A4





Contents

1	TABLE OF CHARACTERS	3
1.1	ASCII Characters.....	3
1.2	Greek letters.....	4



1 Table of characters

1.1 ASCII Characters

0		32		64	@	96	`	128	Ç	160	á	192	Ⓕ	224	Ó
1	☺	33	!	65	A	97	a	129	ü	161	í	193	Ⓖ	225	β
2	☹	34	“	66	B	98	b	130	é	162	ó	194	Ⓗ	226	Ô
3	♥	35	#	67	C	99	c	131	â	163	ú	195	Ⓙ	227	Ò
4	♦	36	\$	68	D	100	d	132	ä	164	ñ	196	—	228	õ
5	♣	37	%	69	E	101	e	133	à	165	Ñ	197	+	229	Õ
6	♠	38	&	70	F	102	f	134	â	166	ª	198	ã	230	μ
7	•	39	‘	71	G	103	g	135	ç	167	º	199	Ã	231	þ
8	■	40	(72	H	104	h	136	ê	168	¿	200	Ⓖ	232	ƒ
9	○	41)	73	I	105	i	137	ë	169	®	201	Ⓗ	233	Ú
10	◼	42	*	74	J	106	j	138	è	170	¬	202	Ⓖ	234	Û
11	♂	43	+	75	K	107	k	139	ï	171	½	203	Ⓗ	235	Ù
12	♀	44	,	76	L	108	l	140	î	172	¼	204	Ⓗ	236	ý
13	♪	45	-	77	M	109	m	141	ì	173	¡	205	=	237	Ý
14	♫	46	.	78	N	110	n	142	Ä	174	«	206	Ⓗ	238	—
15	☀	47	/	79	O	111	o	143	Å	175	»	207	□	239	’
16	▶	48	0	80	P	112	p	144	É	176	▒	208	ð	240	-
17	◀	49	1	81	Q	113	q	145	æ	177	▒	209	Ð	241	±
18	↕	50	2	82	R	114	r	146	Æ	178	▒	210	Ê	242	—
19	!!	51	3	83	S	115	s	147	ô	179		211	Ë	243	¾
20	¶	52	4	84	T	116	t	148	ö	180	Ⓗ	212	È	244	¶
21	§	53	5	85	U	117	u	149	ò	181	Á	213	ı	245	§
22	—	54	6	86	V	118	v	150	û	182	Â	214	Í	246	÷
23	↕	55	7	87	W	119	w	151	ù	183	À	215	Î	247	,
24	↑	56	8	88	X	120	x	152	ÿ	184	©	216	Ï	248	°
25	↓	57	9	89	Y	121	y	153	Ö	185	Ⓗ	217	Ⓗ	249	”
26	→	58	:	90	Z	122	z	154	Ü	186	Ⓗ	218	Ⓗ	250	·
27	←	59	;	91	[123	{	155	ø	187	Ⓗ	219	■	251	1
28	Ⓕ	60	<	92	\	124		156	£	188	Ⓗ	220	■	252	3
29	↔	61	=	93]	125	}	157	Ø	189	ø	221	ı	253	2
30	▲	62	>	94	^	126	~	158	×	190	¥	222	İ	254	■
31	▼	63	?	95	_	127	△	159	f	191	Ⓗ	223	■	255	

I caratteri evidenziati nella cornice possono risultare differenti a seconda del software utilizzato.



1.2 Greek letters

Char	Keyboard ALT Code	HTML Name	Entity Code	Description	Unicode
Alpha					
α	ALT + 224 (945)	α	α	Greek small letter Alpha	U+03B1
ά	ALT + 940		ά	Greek small letter Alpha with Tonos	U+03AC
Α	ALT + 913	Α	Α	Greek capital letter Alpha	U+0391
Ά	ALT + 902		Ά	Greek capital letter Alpha with Tonos	U+0386
Beta					
β	ALT + 225 (946)	β	β	Greek small letter Beta	U+03B2
β	ALT + 976		ϐ	Greek Beta symbol	U+03D0
Β	ALT + 914	Β	Β	Greek capital letter Beta	U+0392
Gamma					
γ	ALT + 947	γ	γ	Greek small letter Gamma	U+03B3
Γ	ALT + (226) 915	Γ	Γ	Greek capital letter Gamma	U+0393
Delta					
δ	ALT + 235 (948)	δ	δ	Greek small letter Delta	U+03B4
Δ	ALT + 916	Δ	Δ	Greek capital letter Delta	U+0394
Epsilon					
ε	ALT + 238 (949)	ε	ε	Greek small letter Epsilon	U+03B5
έ	ALT + 941		έ	Greek small letter Epsilon with Tonos	U+03AD



Char	Keyboard ALT Code	HTML Name	Entity Code	Description	Unicode
€	ALT + 1013		ϵ	Greek lunate Epsilon symbol	U+03F5
Ǝ	ALT + 1014		϶	Greek reversed lunate Epsilon symbol	U+03F6
Ε	ALT + 917	Ε	Ε	Greek capital letter Epsilon	U+0395
Έ	ALT + 904		Έ	Greek capital letter Epsilon with Tonos	U+0388
Zeta					
ζ	ALT + 950	ζ	ζ	Greek small letter Zeta	U+03B6
Ζ	ALT + 918	Ζ	Ζ	Greek capital letter Zeta	U+0396
Eta					
η	ALT + 951	η	η	Greek small letter Eta	U+03B7
ή	ALT + 942		ή	Greek small letter Eta with Tonos	U+03AE
Η	ALT + 919	Η	Η	Greek capital letter Eta	U+0397
Ή	ALT + 905		Ή	Greek capital letter Eta with Tonos	U+0397
Theta					
θ	ALT + 952	θ	θ	Greek small letter Theta	U+03B8
ϑ	ALT + 977	ϑ	ϑ	Greek Theta symbol	U+03D1
Θ	ALT + 233 (920)	Θ	Θ	Greek capital letter Theta	U+0398
Ϙ	ALT + 1012		ϴ	Greek capital Theta symbol	U+03F4
Iota					
ι	ALT + 953	ι	ι	Greek small letter Iota	U+03B9



Char	Keyboard ALT Code	HTML Name	Entity Code	Description	Unicode
í	ALT + 943		ί	Greek small letter Iota with Tonos	U+03AF
ï	ALT + 970		ϊ	Greek small letter Iota with Dialytika	U+03CA
ĩ	ALT + 912		ΐ	Greek small letter Iota with Dialitika and Tonos	U+0390
Ι	ALT + 921	&lota;	Ι	Greek capital letter Iota	U+0399
Ï	ALT + 938		Ϊ	Greek capital letter Iota with Dialitika	U+03AA
Ἰ	ALT + 906		Ί	Greek capital letter Iota with Tonos	U+038A
Kappa					
κ	ALT + 954	κ	κ	Greek small letter Kappa	U+03BA
Κ	ALT + 922	Κ	Κ	Greek capital letter Kappa	U+039A
Lambda					
λ	ALT + 955	λ	λ	Greek small letter Lambda	U+03BB
Λ	ALT + 923	Λ	Λ	Greek capital letter Lambda	U+039B
Mu					
μ	ALT + 230 (956)	μ	μ	Greek small letter Mu	U+03BC
Μ	ALT + 924	Μ	Μ	Greek capital letter Mu	U+039C
Nu					
ν	ALT + 957	ν	ν	Greek small letter Nu	U+03BD
Ν	ALT + 925	Ν	Ν	Greek capital letter Nu	U+039D
Xi					



Char	Keyboard ALT Code	HTML Name	Entity Code	Description	Unicode
ξ	ALT + 958	ξ	ξ	Greek small letter Xi	U+03BE
Ξ	ALT + 926	Ξ	Ξ	Greek capital letter Xi	U+039E
Omicron					
ο	ALT + 959	ο	ο	Greek small letter Omicron	U+03BF
ό	ALT + 972		ό	Greek small letter Omicron with Tonos	U+03CC
Ο	ALT + 927	Ο	Ο	Greek capital letter Omicron	U+039F
Ό	ALT + 908		Ό	Greek capital letter Omicron with Tonos	U+038C
Pi					
π	ALT + 227 (960)	π	π	Greek small letter Pi	U+03C0
ϖ	ALT + 982	ϖ	ϖ	Greek Pi symbol	U+03D6
Π	ALT + 928	Π	Π	Greek capital letter Pi	U+03A0
Rho					
ρ	ALT + 961	ρ	ρ	Greek small letter Rho	U+03C1
Ρ	ALT + 929	Ρ	Ρ	Greek capital letter Rho	U+03A1
Sigma					
σ	ALT + 229 (963)	σ	σ	Greek small letter Sigma	U+03C3
ς	ALT + 962	ς	ς	Greek small letter final Sigma	U+03C2
Ϛ	ALT + 1010		ϲ	Greek lunate Sigma symbol	U+03F2
ϛ	ALT + 891		ͻ	Greek small reversed lunate Sigma symbol	U+037B



Char	Keyboard ALT Code	HTML Name	Entity Code	Description	Unicode
Ϸ	ALT + 892		ͼ	Greek small dotted lunate Sigma symbol	U+037C
ϸ	ALT + 893		ͽ	Greek small reversed dotted lunate Sigma symbol	U+037D
Σ	ALT + 228 (931)	Σ	Σ	Greek capital letter Sigma	U+03A3
Ϻ	ALT + 1017		Ϲ	Greek capital lunate Sigma symbol	U+03F9
ϻ	ALT + 1021		Ͻ	Greek capital reversed lunate Sigma symbol	U+03FD
ϼ	ALT + 1022		Ͼ	Greek capital dotted lunate Sigma symbol	U+03FE
Ͻ	ALT + 1023		Ͽ	Greek capital reversed dotted lunate Sigma symbol	U+03FF
Tau					
τ	ALT + 231 (964)	τ	τ	Greek small letter Tau	U+03C4
Τ	ALT + 932	Τ	Τ	Greek capital letter Tau	U+03A4
Upsilon					
υ	ALT + 965	υ	υ	Greek small letter Upsilon	U+03C5
Ϸ	ALT + 971		ϋ	Greek small letter Upsilon with Dialytika	U+03CB
ύ	ALT + 973		ύ	Greek small letter Upsilon with Tonos	U+03CD
Ϸ	ALT + 944		ΰ	Greek small letter Upsilon with Dialitika and Tonos	U+03B0
Ϸ	ALT + 978	ϒ	ϒ	Greek Upsilon with hook symbol	U+03D2
Υ	ALT + 933	Υ	Υ	Greek capital letter Upsilon	U+03A5



Char	Keyboard ALT Code	HTML Name	Entity Code	Description	Unicode
Ϛ	ALT + 939		Ϋ	Greek capital letter Upsilon with Dialitika	U+03AB
Υ	ALT + 910		Ύ	Greek capital letter Upsilon with Tonos	U+038E
Phi					
φ	ALT + 237 (968)	φ	ψ	Greek small letter Phi	U+03C8
ϕ	ALT + 232 (981)		ϕ	Greek Phi symbol	U+03D5
Φ	ALT + 934	Φ	Φ	Greek capital letter Phi	U+03A6
Chi					
χ	ALT + 967	χ	χ	Greek small letter Chi	U+03C7
Χ	ALT + 935	Χ	Χ	Greek capital letter Chi	U+03A7
Psi					
ψ	ALT + 968	ψ	ψ	Greek small letter Psi	U+03C8
Ψ	ALT + 936	Ψ	Ψ	Greek capital letter Psi	U+03A8
Omega					
ω	ALT + 969	ω	ω	Greek small letter Omega	U+03C9
ώ	ALT + 974		ώ	Greek small letter Omega with Tonos	U+03CE
Ω	ALT + 234 (937)	Ω	Ω	Greek capital letter Omega	U+03A9
ᾨ	ALT + 911		Ώ	Greek capital letter Omega with Tonos	U+038F